



# LCI

DOENZ RANCHES  
*Hereford and Black Angus*

## 41ST ANNUAL SALE

November 20, 2014  
at the Ranch



# Welcome to LCIs 41st Annual Production Sale!

We would like to thank our customers, family, friends and neighbors who have supported us over the years and helped make our progress possible!

Exciting times to be in the cattle industry - record shortage of breeding cattle will reward the people that stayed steady and kept the course during the lean years in the past. Soaring land prices, we can't make more land! Ever increasing input costs are a reality that we all face. The best genetics available is the cheapest investment we can make to increase our bottom line. At LCI we leave no stone uncovered to seek out those superior genetics. We are excited about the new bulls we used in both our breeds, them and the age tested bulls that are the backbone of our herd, are producing progeny that we are truly proud to present to you for your evaluation.

As always we will winter free of charge till April 1st, 2015 or have fall delivery up to 300 miles to central points. Consider our sale terms of half cash sale day and balance due June 1st, 2015, interest free.

Feel free to contact anyone listed in the phone directory to help make the right selection for your herd.

Please join us on Thursday, November 20th for lunch before the sale and have a day to visit with fellow cattlemen!

Nelson Doenz



*Nelson & Paula Doenz*  
Phone: (403)642-2380

*Brad, Jordy, Veronica  
Doenz*  
(403)642-3894

*Josh Pickett  
(Herdsman)*  
(403)642-7686



*Thursday,  
November 20st, 2014*  
1:00 p.m. at the Ranch  
(see map on the inside back cover)  
PO Box 362, Warner, AB T0K 2L0  
E-mail: doenzranches@gmail.com  
[www.doenzranches.net](http://www.doenzranches.net)

*Tant Boothman*

## PHONE DIRECTORY

Nelson...(403)642-7696  
Paula.....(403)642-7695  
Brad.....(403)642-7694  
Josh.....(403)642-7686



# Reference Herdsires



Fall 2014 EPD's ~ Top of the breed in blue												
CE	BW	WW	YW	Milk	TM	MCE	SC	CW	FMI	Fat	REA	Marb
-2.8	3.6	65.0	119.3	30.0	62.5	4.3	1.4	157.0	207.1	-0.43	1.29	0.21
		2%	1%	4%	1%	4%	3%		1%	1%	1%	10%



Fall 2014 EPD's ~ Top of the breed in blue												
CE	BW	WW	YW	Milk	TM	MCE	SC	CW	FMI	Fat	REA	Marb
13.8	-2.9	53.1	71.7	31.8	58.4	6.3	1.5	68.2	88.7	0.059	0.40	0.22
1%	1%	25%		3%	3%	1%	2%	15%			25%	10%



Fall 2014 EPD's ~ Top of the breed in blue												
CE	BW	WW	YW	Milk	TM	MCE	SC	CW	FMI	Fat	REA	Marb
-1.5	5.3	55.5	96.1	17.4	45.2	-0.1	0.6	108.6	133.9	0.0	0.45	-0.13
		20%	10%		45%							

## NJW 73S M326 TRUST 100W

C02938213

73S 100W

Feb. 02 2009

RRH MR FELT 3008

**KCF BENNETT 3008 M326**

KCF MISS 459 F284

PW VICTOR BOOMER P606

**NJW P606 72N DAYDREAM 73S**

NJW 94J DEW 72N

A Denver Supreme Champion Bull! Trust has lived up to all expectations we had for him. His epds are elite in every way. His calves consistently rise to the top of the group. His females look outstanding, feminine yet with lots of natural thickness.

## CHURCHILL SENSATION 028X

C02977432

028

January 14 2010

CL 1 DOMINO 9126J 1ET

**UPS DOMINO 3027**

UPS MISS DIAMOND 1353

GH RAMBO 279R

**CHURCHILL LADY 7202T**

CL 1 DOMINETTE 301N

Sensation is a sensational calving ease and birth weight bull yet has above average weaning weight. A top maternal sire with milk and total maternal in the very elite of the breed. 028X will increase carcass value. His bulls have lots of middle and quarter.

## MJT TOTAL ET 311W

C02928156

MT 311W

March 03 2009

BW: 88

Adj. WWT: 871

Adj. YWT: 1357

DUNROBIN 921J CENTURY 61L

**MJT CENTURY 264P**

MJT MISS 106G SUPER 49E 57K

RS NITRO 77K

**MJT MISS 14H CHARISMA 228P**

MJT MISS WESTWIND 234B 14H

Senior Champion Bull at the 2012 World Hereford Conference Show. He has a 88 lb birth weight yet a 871 lb weaning weight and a 1357 lb yearling weight. He breeds in extra performance and length of body. Most calves have good pigment and super hair coats.





## LCI 107R RIBSTONE 154U

C02911775 LCI 154U January 22, 2008  
 BW: 102 Adj WWT: 790 Adj YWT: 1324

K 64H RIBSTONE LAD 157K  
**LCI 157K RIBSTONE 107R**  
 LCI 82H KAHLUA ANDIE 174M  
 LCI 6H WALDO 125P  
**LCI 125P NELLIE 105S**  
 LCI T097 TAM O'LASS 43M

A herdsire that is admired by many. He has extra muscle, clean fronted, and wide backed. He sires calves with pigment, performance and style. Top of the breed for performance and maternal strength. Semen being used in Uruguay, Argentina, and New Zealand.

Fall 2014 EPD's ~ Top of the breed in blue												
CE	BW	WW	YW	Milk	TM	MCE	SC	CW	FMI	Fat	REA	Marb
1.0	6.4	56.9	98.0	35.1	63.6	2.4	1.4	74.6	168.4	-0.023	0.35	0.03
		15%	10%	2%	2%	30%	10%		5%	15%	40%	



## LCI 154U RIBSTONE 251Y

C02953224 LCI 251Y March 27 2011  
 BW: 102 Adj WWT: 695 Adj YWT: 1178

LCI 157K RIBSTONE 107R  
**LCI 107R RIBSTONE 154U**  
 LCI 125P NELLIE 105S  
 LCI 6H WALDO 125P  
**LCI 125P MISS WALDO 23T**  
 LCI 9M MRS KING 191P

A sire we retained to carry on after 154U. His dam is one of our elite cows, in fact his whole pedigree is filled with our best cows. He has some very interesting bull calves in the sale.

Fall 2014 EPD's ~ Top of the breed in blue												
CE	BW	WW	YW	Milk	TM	MCE	SC	CW	FMI	Fat	REA	Marb
1.6	4.8	46.6	82.4	28.5	51.8	2.3	1.0	70.0	126.0	0.006	0.23	-0.04
			35%	10%	15%	25%	20%		45%			

**TERMS:** Cash or half cash – balance due June 1<sup>st</sup>, 2015, interest free. If half cash terms are desired, we request that the buyer leave a post-dated cheque. US buyers please note – US funds will be accepted at par; exchange will be calculated per bank exchange rates as at sale day morning.

**\*NEW\* VOLUME DISCOUNT**

Purchase 5 to 9 bulls and take 5% off the total price.  
 OR Purchase 10 or more animals and take 10% off.

**SALE REPRESENTATIVES:**

Bob Balog, Auctioneer... 403.382.5727 Louis Balog.....403.331.0611  
 Brad Balog..... 403.642.7444 Brad Dubeau, CHD.. 403.512.2235  
 Chris Poley (Today's Angus Advantage).....306-220-5006

**GUARANTEE:** Bulls are guaranteed to be breeders. If failing to be satisfactory breeders, they will be replaced or a credit given on purchase of replacement. They must be returned to us for evaluation of the animal in good health and properly cared for. In any event, the sellers are responsible only to the extent of the purchase price of said animal. Each animal becomes the responsibility of the purchaser as soon as sold. Standard Canadian Hereford Association guarantee applies.

**DELIVERY:**

Bulls: If the buyer wishes, free fall delivery up to 300 miles to

central points, and \$100 deducted off price or free wintering and the bulls picked up by April 1st, 2015. All bulls must be insured, available sale day from Heather Barr.

**CANADIAN FOOD INSPECTION**


USA: Animals going to the USA will be delivered through the Coutts/Sweetgrass border with federal health papers. Buyer assumes transportation costs from Sweetgrass, Montana. Again, animals need to be insured and we will co-operate with any other arrangements that need to be made on all animals.

**LIABILITY:** Mishaps at cattle sales are very rare and every precaution will be taken for the safety of visitors; however, the owners and management assume no liability should an accident occur.

**ERRORS:** If errors are noted in the catalogue, corrections announced from the stand take precedence over printed material.

**ACCOMMODATIONS:**

Reservations can be made for you, just contact us. There is a paved, lighted airstrip 2.5 miles from the ranch. Contact us to pick you up at the airfield.



**HEATHER BARR**

Suite 302, 13220 St. Albert Trail, Edmonton, AB T5L 4W1  
 Phone: 403-337-0052 Cell: 780-853-7067  
 lbarr@cdfmains.com Fax: 403-337-0052  
 www.cdfmains.com Head Office: 780-447-3276

**Transit Livestock Mortality Equine**

**MAP**



To Lethbridge  
 To Taber 2 mi.  
 To Great Falls  
 To Warner  
 To LCI Sale Barn  
 Rgs. Rd. #170  
 Hwy #56  
 Hwy #504

- Directions -  
 2 miles east of Warner on #504  
 & 2 miles north on Rgs. Rd. #170





**1**

**Polled**

**LCI 100W TRUST 153B**

C02998641 LCI 153B Feb. 18 2014  
 BW: 105 Adj WWT: 821

KCF BENNETT 3008 M326

**NJW 73S M326 TRUST 100W**

NJW P606 72N DAYDREAM 73S  
 R 0041 NORTH STAR 40U

**LCI 40U NORTH STAR MISS 31X**

LCI 9K MS QUIGLEY 189M



Fall 2014 EPD's ~ Top of the breed in <i>blue</i>									
BW	WW	YW	Milk	TM	SC	FMI	Fat	REA	Marb
5.1	58.7	111.7	24.6	64.0	1.1	176.0	-0.024	0.80	-0.06
	15%	2%	2%	2%	20%	3%	15%	3%	

As much potential as any in the sale. 821 lb WW and very top of the breed for maternal and performance EPD's. 31X was Junior Champion at the World Hereford Conference Rancher Show and has a great 8116 son working at Coulee Crest Herefords.



**2**

**LCI BD TRUST 370B**

C02998647 LCIB 370B Feb. 21 2014  
 BW: 102 Adj WWT: 757

KCF BENNETT 3008 M326

**NJW 73S M326 TRUST 100W**

NJW P606 72N DAYDREAM 73S  
 LCI 31R STANMORE 81T

**LCI 81T STANMORE MISS 309W**

LCI BD 122P PANDA GAL 309T



Fall 2014 EPD's ~ Top of the breed in <i>blue</i>									
BW	WW	YW	Milk	TM	SC	FMI	Fat	REA	Marb
6.2	66.9	108.5	25.3	58.8	1.1	188.8	-0.045	0.93	0.02
	3%	4%	25%	10%	20%	1%	3%	2%	

This bull has potential to be a herd changer with so much muscle, outstanding structure and presence.



**3**

**LCI 100W TRUST 119B**

C02998637 LCI 119B Feb. 25 2014  
 BW: 99 Adj WWT: 640

KCF BENNETT 3008 M326

**NJW 73S M326 TRUST 100W**

NJW P606 72N DAYDREAM 73S  
 LBH 20J STANMORE 31R

**LCI 31R STANMORE LASS 128T**

LCI 6N ROBIN HOOD MISS 174R



Fall 2014 EPD's ~ Top of the breed in <i>blue</i>									
BW	WW	YW	Milk	TM	SC	FMI	Fat	REA	Marb
5.0	60.8	106.9	25.6	56.0	1.3	182.2	-0.030	0.67	0.13
	10%	5%	25%	10%	15%	2%	4%	10%	25%

- This fellow has much muscle, natural thickness and performance as any calf in the sale.
- 128T has the easy fleshing trait that 31R passed on.



**4**

**LCI 028X SENSATION 186B**

C02998257 LCI 186B Feb. 05 2014  
BW: 74 Adj WWT: 781

UPS DOMINO 3027

**CHURCHILL SENSATION 028X**

CHURCHILL LADY 7202T ET  
R 0041 NORTH STAR 40U

**LCI 40U NORTH STAR LASS 175Z**

LCI 125P MISS WALDO 89T



Fall 2014 EPD's ~ Top of the breed in <i>blue</i>									
BW	WW	YW	Milk	TM	SC	FMI	Fat	REA	Marb
-0.8	49.4	75.2	29.9	54.6	1.2	120.6	0.021	0.48	0.10
3%	40%		10%	15%	15%			25%	35%

- A rare find! A 74 lb birth weight, a 781 lb WW and an index of 110 in our herd.
- The Sensation x 40U combination assures light birth weight.
- What a beautiful first calf heifer 175Z is.



**6**

**LCI 100W TRUST 138B**

C02994095 LCI 138B Feb. 15 2014  
BW: 70 Adj WWT: 687

**Polled**

KCF BENNETT 3008 M326

**NJW 73S M326 TRUST 100W**

NJW P606 72N DAYDREAM 73S  
LCI 157K RIBSTONE 107R

**LCI 107R RIBSTONE MISS 99X**

LCI DIAMOND GIRL 38J



Fall 2014 EPD's ~ Top of the breed in <i>blue</i>									
BW	WW	YW	Milk	TM	SC	FMI	Fat	REA	Marb
3.6	57.6	102.4	27.4	56.2	1.4	185.7	-0.034	0.77	0.16
	20%	5%	15%	10%	10%	2%	5%	5%	20%

- Pigmented, performance and light birth weight.
- Trust x 107R assures extra milk, WW and YW.
- Top of the breed in carcass traits.



**5**

**LCI 028X SENSATION 235B**

C02998265 LCI 235B Feb. 15 2014  
BW: 80 Adj WWT: 705

UPS DOMINO 3027

**CHURCHILL SENSATION 028X**

CHURCHILL LADY 7202T ET  
R 0041 NORTH STAR 40U

**LCI 40U NORTH STAR LASS 195Z**

LCI 31R STANMORE LASS 83T



Fall 2014 EPD's ~ Top of the breed in <i>blue</i>									
BW	WW	YW	Milk	TM	SC	FMI	Fat	REA	Marb
-0.1	49.1	72.2	29.4	54.0	1.1	114.2	0.024	0.38	0.14
10%	45%		10%	15%	20%			40%	25%

- A birth weight of 80 lbs and a 705 lb WW.
- Again a Sensation x 40U cross that guarantees light birth weights.
- The dam 195Z definitely is the right kind of female.



**7**

**LCI BD 311 TOTAL 355B**

C02998270 LCIB 355B Feb. 08 2014  
BW: 95 Adj WWT: 712

MJT CENTURY 264P

**MJT TOTAL ET 311W**

MJT MISS 14H CHARISMA 228P  
LCI 6H WALDO 125P

**LCI BD MISS WALDO 310T**

LCI BD DUNBAR GIRL 211P



Fall 2014 EPD's ~ Top of the breed in <i>blue</i>									
BW	WW	YW	Milk	TM	SC	FMI	Fat	REA	Marb
4.6	47.8	82.3	20.7	44.6	0.7	109.5	0.019	0.26	-0.07
	40%								

- One of Totals most complete calves.
- 310T's offspring always rises to the top!





**8**

**LCI JP TRUSTED WARRIOR 700B**

C02994347 LCIJ 700B Feb. 18 2014  
 BW: 97 Adj WWT: 729

**Polled**

KCF BENNETT 3008 M326

**NJW 73S M326 TRUST 100W**

NJW P606 72N DAYDREAM 73S  
 LCI 107R RIBSTONE 156U

**LCI 156U RIBSTONE MISS 78X**

LCI 125P WALDO LADY 28U



Fall 2014 EPD's ~ Top of the breed in <i>blue</i>									
BW	WW	YW	Milk	TM	SC	FMI	Fat	REA	Marb
5.5	65.7	114.8	28.9	61.8	1.3	168.1	-0.008	0.83	0.13
	2%	2%	10%	3%	10%	5%		3%	30%

- Pigmented and short marked.
- 78X is an excellent young cow with an oh so nice udder.
- Performance at the top of the breed, yet very strong milk numbers and carcass.

**10**

**LCI 100W TRUST 177B**

C02998643 LCI 177B Feb. 16 2014  
 BW: 98 Adj WWT: 733

**Polled**

KCF BENNETT 3008 M326

**NJW 73S M326 TRUST 100W**

NJW P606 72N DAYDREAM 73S  
 LCI 122P PANDA 51T

**LCI CLASSIC LADY 36W**

LCI 157K RIBSTONE LASS 36P

Fall 2014 EPD's ~ Top of the breed in <i>blue</i>									
BW	WW	YW	Milk	TM	SC	FMI	Fat	REA	Marb
4.7	58.6	98.8	27.4	56.7	1.2	174.1	-0.030	0.82	0.13
	15%	10%	15%	10%	15%	3%	10%	3%	25%

- Has the high performance, milk and carcass that Trust consistently provides plus the extra pigment that 36W has on her face and udder.
- Jim and Terry Newton bought a son of hers last year.



**9**

**LCI 100W TRUST 165B**

C02998642 LCI 165B Feb. 16 2014  
 BW: 101 Adj WWT: 746

KCF BENNETT 3008 M326

**NJW 73S M326 TRUST 100W**

NJW P606 72N DAYDREAM 73S  
 JNHR RED STANDARD 68R

**LCI 68R STANDARD GAL 83U**

LCI 82H MISS KAHLUA 94K



Fall 2014 EPD's ~ Top of the breed in <i>blue</i>									
BW	WW	YW	Milk	TM	SC	FMI	Fat	REA	Marb
4.9	58.4	101.0	21.7	50.9	1.0	155.2	-0.015	0.71	0.01
	15%	10%	45%	30%	25%	10%	20%	10%	

- Tons of pigment on this athletic Trust son.
- Performance plus!
- A big REA EPD.

**11**

**LCI 028X SENSATION 217B**

C02998263 LCI 217B Feb. 08 2014  
 BW: 78 Adj WWT: 668

UPS DOMINO 3027

**CHURCHILL SENSATION 028X**

CHURCHILL LADY 7202T ET  
 CHURCHILL RAMBO 8116U ET

**LCI 8116 CHINOOK LASS 81Z**

LCI CLASSIC LADY 186W

Fall 2014 EPD's ~ Top of the breed in <i>blue</i>									
BW	WW	YW	Milk	TM	SC	FMI	Fat	REA	Marb
0.7	51.2	73.6	25.5	51.1	1.1	110.7	0.026	0.40	0.10
3%	35%		25%	45%	20%			35%	35%

- A red eyed Sensation calf with a 78 lb birth weight out of an 8116 daughter and this assures calving ease and maternal power.
- A top heifer bull prospect.

**12**

**LCI 028X SENSATION 55B**

C02998237 LCI 55B Feb. 14 2014  
 BW: 95 Adj WWT: 727

UPS DOMINO 3027

**CHURCHILL SENSATION 028X**

CHURCHILL LADY 7202T ET  
 BP PANDA 122P

**LCI 122P PANDA 35T**

LCI 82H KAHLUA LADY 130L



Fall 2014 EPD's ~ Top of the breed in <i>blue</i>									
BW	WW	YW	Milk	TM	SC	FMI	Fat	REA	Marb
2.2	54.3	76.2	25.9	53.1	1.1	105.6	0.029	0.36	0.06
25%	25%		20%	20%	20%	45%	45%		

- A pigmented Sensation son with a BW EPD in the top 25% of the breed.
- Expect early growth and super females from this pedigree.



**13**

**LCI 028X SENSATION 136B**

C02998249 LCI 136B Feb. 19 2014  
 BW: 99 Adj WWT: 618

UPS DOMINO 3027

**CHURCHILL SENSATION 028X**

CHURCHILL LADY 7202T ET  
 LCI 6H WALDO 125P

**LCI 125P MISS WALDO 20T**

LCI T097 TAM O' LASS 118N

**14**

**LCI 251Y RIBSTONE 62B**

C02998238 LCI 62B Feb. 10 2014  
 BW: 99 Adj WWT: 773

LCI 107R RIBSTONE 154U

**LCI 154U RIBSTONE 251Y**

LCI 125P MISS WALDO 23T  
 R 0041 NORTH STAR 40U

**LCI NORTH STAR LASS 108Y**

LCI 107R RIBSTONE GAL 255W



Fall 2014 EPD's ~ Top of the breed in <i>blue</i>									
BW	WW	YW	Milk	TM	SC	FMI	Fat	REA	Marb
3.0	50.1	77.8	25.9	51.0	1.0	106.7	0.034	0.28	0.12
40%	40%		25%	25%	25%				25%

Fall 2014 EPD's ~ Top of the breed in <i>blue</i>									
BW	WW	YW	Milk	TM	SC	FMI	Fat	REA	Marb
4.8	52.2	93.0	33.2	59.3	1.1	159.3	-0.019	0.42	-0.05
	35%	20%	4%	5%	20%	10%	20%	35%	

- A long bodied, thick made Sensation calf.
- This will be an impressive two year old.

- A proud herd sire prospect that stands out.
- His dam is a sweet young 40U daughter that raised a herd sire for Anderson Family Herefords with her first calf.
- Milk numbers are at the very top of the breed.



**15**

**LCI 100W TRUST 179B**

C02998644 LCI 179B Feb. 19 2014  
 BW: 99 Adj WWT: 696

KCF BENNETT 3008 M326

**NJW 73S M326 TRUST 100W**

NJW P606 72N DAYDREAM 73S  
 LCI 157K RIBSTONE 46P

**LCI 46P RIBSTONE LASS 114T**

LCI T097 TAM O' LASS 88M



**16**

**Polled**

**LCI 100W TRUST 15B**

C02994066 LCI 15B Feb. 12 2014  
 BW: 102 Adj WWT: 755

KCF BENNETT 3008 M326

**NJW 73S M326 TRUST 100W**

NJW P606 72N DAYDREAM 73S  
 LCI 6H WALDO 125P

**LCI 125P OSWALD LASSY 59S**

LCI 157K RIBSTONE GIRL 214N

Fall 2014 EPD's ~ Top of the breed in <i>blue</i>									
BW	WW	YW	Milk	TM	SC	FMI	Fat	REA	Marb
5.0	58.6	97.9	27.1	56.4	1.2	163.9	-0.019	0.67	0.17
	15%	15%	15%	10%	15%	5%	20%	10%	20%

Fall 2014 EPD's ~ Top of the breed in <i>blue</i>									
BW	WW	YW	Milk	TM	SC	FMI	Fat	REA	Marb
4.9	56.5	104.6	28.8	57.1	1.2	161.1	-0.007	0.73	0.13
	20%	5%	15%	5%	15%	5%	35%	5%	25%

- An extra long, clean made Trust calf out of the Reserve Senior Champion cow at the World Hereford Conference Rancher Show.
- She also raised a top bull for Pahl Livestock's good herd.
- Top EPD's for growth, milk and carcass.

- Extra performance, pigment bred in and eye appeal to burn.
- 59S is a heavily pigmented cow (eyes and udder).



**17****LCI 100W TRUST 129B**C02998638 LCI 129B Feb. 21 2014  
BW: 99 Adj WWT: 713

KCF BENNETT 3008 M326

**NJW 73S M326 TRUST 100W**NJW P606 72N DAYDREAM 73S  
LCI 157K RIBSTONE 107R**LCI 107R RIBSTONE MISS 101X**

LCI SUPERIOR GIRL 223H

*Fall 2014 EPD's ~ Top of the breed in blue*

BW	WW	YW	Milk	TM	SC	FMI	Fat	REA	Marb
4.6	58.8	100.1	27.8	57.2	1.4	170.9	-0.024	0.67	0.13
	10%	4%	10%	4%	3%	1%	10%	4%	25%

- With 107R and Trust in the pedigree this spells performance in milk and carcass.
- His dam is a real productive young moderate framed female from a strong cow family.

**19****LCI 100W TRUST 13B**C02998635 LCI 13B Feb. 06 2014  
BW: 90 Adj WWT: 746

KCF BENNETT 3008 M326

**NJW 73S M326 TRUST 100W**NJW P606 72N DAYDREAM 73S  
K 64H RIBSTONE LAD 157K**LCI 157K RIBSTONE GAL 54R**

LCI SOUTH RIDGE LASS 159J

*Fall 2014 EPD's ~ Top of the breed in blue*

BW	WW	YW	Milk	TM	SC	FMI	Fat	REA	Marb
3.0	52.4	92.4	28.0	54.2	1.4	189.6	-0.042	0.71	0.25
	35%	20%	15%	15%	10%	1%	4%	5%	10%

- A volume bull that will sire soggy heavy calves the market wants.
- Bred in performance.
- Second to none EPD's and very elite carcass traits.

**20****LCI 100W TRUST 152B**C02998640 LCI 152B Feb. 16 2014  
BW: 102 Adj WWT: 744

KCF BENNETT 3008 M326

**NJW 73S M326 TRUST 100W**NJW P606 72N DAYDREAM 73S  
LCI 157K RIBSTONE 4P**LCI 4P GILLIAN 39S**

LCI 9640 PRINCESS 204L

*Fall 2014 EPD's ~ Top of the breed in blue*

BW	WW	YW	Milk	TM	SC	FMI	Fat	REA	Marb
4.8	56.2	102.2	25.6	53.7	1.4	174.4	-0.021	0.68	0.19
	15%	3%	20%	15%	3%	1%	10%	4%	10%

- Thick, pigmented and out of a 4P daughter with similar qualities.
- Use 152B to increase WW and YW, but expect super females also.

**18****LCI 100W TRUST 25B**C02994075 LCI 25B Feb. 05 2014  
BW: 97 Adj WWT: 705

KCF BENNETT 3008 M326

**NJW 73S M326 TRUST 100W**NJW P606 72N DAYDREAM 73S  
LBH 20J STANMORE 31R**LCI 31R STANMORE LASS 146T**

LCI 155N MRS KING 50R

*Fall 2014 EPD's ~ Top of the breed in blue*

BW	WW	YW	Milk	TM	SC	FMI	Fat	REA	Marb
4.4	58.2	102.0	27.6	56.7	1.1	181.0	-0.029	0.78	0.21
	15%	5%	15%	10%	20%	2%	10%	4%	10%

- A carcass improver! If you feed out your calves then 25B is a must
- Top EPD's right across the board.

**21****LCI 100W TRUST 122B**C02994091 LCI 122B Feb. 19 2014  
BW: 99 Adj WWT: 696

KCF BENNETT 3008 M326

**NJW 73S M326 TRUST 100W**NJW P606 72N DAYDREAM 73S  
LCI 122P PANDA 51T**LCI CLASSIC LADY 186W**

LCI 125P OSWALD LASSY 59S

*Fall 2014 EPD's ~ Top of the breed in blue*

BW	WW	YW	Milk	TM	SC	FMI	Fat	REA	Marb
4.5	58.3	104.0	28.6	57.8	1.2	167.7	-0.017	0.78	0.11
	15%	5%	15%	10%	15%	5%	20%	4%	30%

- A short marked pigmented Trust bull.
- 186W is heavily pigmented on her face and udder.
- Powerful EPD's for performance, milk and carcass.

**22****LCI 154U RIBSTONE 123B**C02998244 LCI 123B Feb. 15 2014  
BW: 105 Adj WWT: 731

LCI 157K RIBSTONE 107R

**LCI 107R RIBSTONE 154U**LCI 125P NELLIE 105S  
LCI 157K RIBSTONE 79P**LCI 79P RIBSTONE GAL 91S**

LCI SOUTH RIDGE LASS 159J

*Fall 2014 EPD's ~ Top of the breed in blue*

BW	WW	YW	Milk	TM	SC	FMI	Fat	REA	Marb
6.6	49.9	89.5	27.6	52.6	1.3	169.9	-0.031	0.16	0.06
	40%	25%	15%	20%	10%	5%	10%		45%

- Extra performance characteristics of 154U.
- Double bred Ribstone calf that will increase WW and put milk in the herd.

**23****LCI 028X SENSATION 16B**C02998233 LCI 16B Feb. 12 2014  
BW: 75 Adj WWT: 614

UPS DOMINO 3027

**CHURCHILL SENSATION 028X**CHURCHILL LADY 7202T ET  
LBH 20J STANMORE 31R**LCI 31R STANMORE LASS 33T**

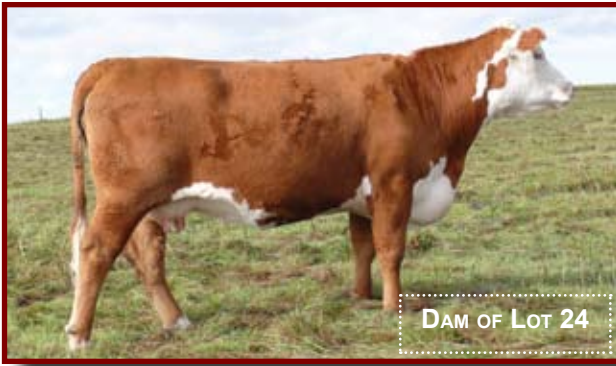
LCI SUPERIOR GIRL 223H

*Fall 2014 EPD's ~ Top of the breed in blue*

BW	WW	YW	Milk	TM	SC	FMI	Fat	REA	Marb
1.2	48.9	71.1	22.8	47.3	1.2	109.7	0.029	0.14	0.18
	20%		40%	40%	15%				20%

- Breed your heifers to 16B and sleep easy!
- 33T has a top 107R son working at Ovalyn Ranches.
- From a good cow family.





**24**

**LCI 251Y RIBSTONE 169B**

C02998252 LCI 169B Feb. 18 2014  
 BW: 92 Adj WWT: 701

LCI 107R RIBSTONE 154U

**LCI 154U RIBSTONE 251Y**

LCI 125P MISS WALDO 23T  
 R 0041 NORTH STAR 40U

**LCI NORTH STAR LASS 96Y**

LCI 107R RIBSTONE GAL 226W

**25**

**LCI 028X SENSATION 121B**

C02998245 LCI 121B March 02 2014  
 BW: 90 Adj WWT: 630

UPS DOMINO 3027

**CHURCHILL SENSATION 028X**

CHURCHILL LADY 7202T ET  
 JNHR RED STANDARD 68R

**LCI 68R RED RIBSTONE LADY 9W**

LCI 157K RIBSTONE LASS 30P

Fall 2014 EPD's ~ Top of the breed in <i>blue</i>									
BW	WW	YW	Milk	TM	SC	FMI	Fat	REA	Marb
4.2	54.3	89.3	31.7	58.9	1.1	122.3	0.018	0.36	0.02
	20%	15%	3%	3%	15%			30%	

- A pigmented, heavy performance calf.
- Double bred 107R spells extra strong maternal pedigree.
- 96Y is an attractive feminine moderate framed cow which we would like a whole herd of.

Fall 2014 EPD's ~ Top of the breed in <i>blue</i>									
BW	WW	YW	Milk	TM	SC	FMI	Fat	REA	Marb
1.9	52.6	76.3	26.1	52.4	1.2	106.8	0.028	0.27	0.06
35%	35%		20%	20%	15%				

- One has to appreciate the presence 121B has! One of the largest framed calves yet light birth weight. 9W is one of 68R's best females.

**26**

**LCI BD 154U RIBSTONE 365B**

C02998271 LCIB 365B Feb. 20 2014  
 BW: 110 Adj WWT: 835

LCI 157K RIBSTONE 107R

**LCI 107R RIBSTONE 154U**

LCI 125P NELLIE 105S  
 HR MAKER 123H

**BP 123H EXTRA LADY 15L**

BP LAREDO LADY 21H

**27**

**LCI 028X SENSATION 76B**

C02998239 LCI 76B Feb. 21 2014  
 BW: 70 Adj WWT: 578

UPS DOMINO 3027

**CHURCHILL SENSATION 028X**

CHURCHILL LADY 7202T ET  
 LCI 6H WALDO 125P

**LCI 125P MISS WALDO 61T**

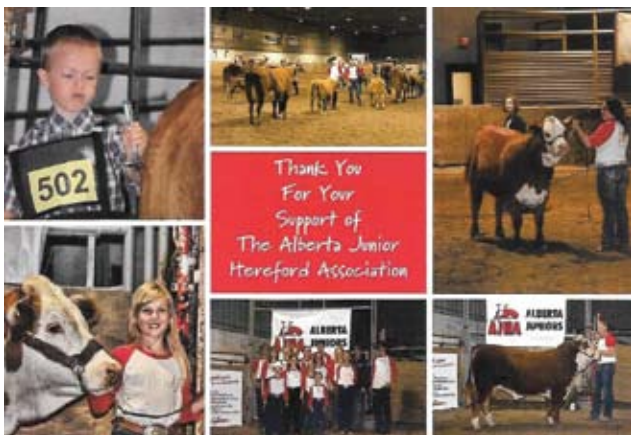
LCI 82H KAHLUA LADY 109L

Fall 2014 EPD's ~ Top of the breed in <i>blue</i>									
BW	WW	YW	Milk	TM	SC	FMI	Fat	REA	Marb
8.9	60.4	108.6	24.8	55.0	1.1	165.9	-0.015	0.50	0.02
	15%	4%	30%	15%	20%	5%	25%	25%	

- The very top WW in our herd this year at 835 lb and index of 118.
- Performance not only comes from our 154U bull but the old BP 15L cow that consistently put pounds in her progeny.
- BP 15L has a top 159T son working at White Lake.


Fall 2014 EPD's ~ Top of the breed in <i>blue</i>									
BW	WW	YW	Milk	TM	SC	FMI	Fat	REA	Marb
1.2	48.4	78.0	26.8	51.0	1.2	89.9	0.058	0.18	0.15
45%			20%	25%	15%				25%

- A heifer bull that will give performance at the breed average.
- Expect super females out of 76B.
- 61T is a very good 125P daughter.



To: LCI/Doenz Ranches

Thank-you for supporting Showdown by sponsoring the Intermediate judging competition. Your support is greatly appreciated.

 and Laurie Morasch

From: Cheyenne Catley





**28**

**LCI 311W TOTAL 11B**

C02998232 LCI 11B Feb. 11 2014  
BW: 105 Adj WWT: 701

MJT CENTURY 264P

**MJT TOTAL ET 311W**

MJT MISS 14H CHARISMA 228P  
R 0041 NORTH STAR 40U

**LCI KD NORTH STAR MISS 36X**

LCI KD SAPHIRE 159H

Fall 2014 EPD's ~ Top of the breed in <i>blue</i>										
BW	WW	YW	Milk	TM	SC	FMI	Fat	REA	Marb	
6.1	58.8	98.7	23.6	53.0	0.7	144.6	-0.009	0.57	-0.13	
	15%	10%	30%	20%		20%	35%	15%		

- A Total bull out of one of my favorite cow families; 36X, 159H, and 12B all top producers in our herd with exceptional phenotype.
- 159H and 12B produced here to a ripe old age!

**29**

**LCI 311W TOTAL 5B**

C02998231 LCI 5B Feb. 12 2014  
BW: 93 Adj WWT: 658

MJT CENTURY 264P

**MJT TOTAL ET 311W**

MJT MISS 14H CHARISMA 228P  
LCI 31R KING STANMORE 159T

**LCI 159T STANMORE MISS 62W**

LCI 125P MISS WALDO 119T

Fall 2014 EPD's ~ Top of the breed in <i>blue</i>										
BW	WW	YW	Milk	TM	SC	FMI	Fat	REA	Marb	
4.3	48.6	81.4	19.5	43.8	0.8	124.4	0.008	0.17	0.05	
	45%	45%								

- 62W in the middle of the road for frame but heavy and easy fleshing
- A bull that will sire those market topping steer calves yet his females will be keepers.

**30**

**LCI 311W TOTAL 120B**

C02998243 LCI 120B Feb. 23 2014  
BW: 105 Adj WWT: 729

MJT CENTURY 264P6

**MJT TOTAL ET 311W**

MJT MISS 14H CHARISMA 228P  
LCI 31R STANMORE 81T

**LCI 81T STANMORE RIB LASS 61W**

LCI 79P RIBSTONE LASS 48T

Fall 2014 EPD's ~ Top of the breed in <i>blue</i>										
BW	WW	YW	Milk	TM	SC	FMI	Fat	REA	Marb	
6.7	56.9	97.3	21.2	49.7	0.9	137.1	0.002	0.26	-0.04	
	20%	15%	45%	30%	30%	30%				

- A Total calf with an WW of 729 lbs,
- Good thickness and length of body.

**31**

**LCI 028X SENSATION 163B**

C02998251 LCI 163B Feb. 22 2014  
BW: 91 Adj WWT: 625

UPS DOMINO 3027

**CHURCHILL SENSATION 028X**

CHURCHILL LADY 7202T ET  
LCI 6H WALDO 125P

**LCI 125P MISS WALDO 89T**

LCI 157K RIBSTONE LASS 74P

Fall 2014 EPD's ~ Top of the breed in <i>blue</i>										
BW	WW	YW	Milk	TM	SC	FMI	Fat	REA	Marb	
0.8	48.9	75.0	26.7	51.2	1.2	102.2	0.041	0.27	0.15	
10%			15%	25%	15%					15%

- A Sensation bull calf with extra pigment and style.

**32**

**LCI 311W TOTAL 171B**

C02998253 LCI 171B Feb. 21 2014  
BW: 96 Adj WWT: 689

MJT CENTURY 264P

**MJT TOTAL ET 311W**

MJT MISS 14H CHARISMA 228P  
LCI 157K RIBSTONE 107R

**LCI 107R RIBSTONE GAL 77W**

LCI 31R STANMORE LASS 153T

Fall 2014 EPD's ~ Top of the breed in <i>blue</i>										
BW	WW	YW	Milk	TM	SC	FMI	Fat	REA	Marb	
5.6	56.7	95.1	22.3	50.7	1.1	160.3	-0.021	0.37	0.00	
	15%	15%	40%	25%	20%		15%	40%		

- Out of a moderate easy fleshing 107R daughter.
- Good performance and milk bred into this bull.

**33**

**LCI 311W TOTAL 127B**

C02998247 LCI 127B Feb. 23 2014  
BW: 97 Adj WWT: 674

MJT CENTURY 264P

**MJT TOTAL ET 311W**

MJT MISS 14H CHARISMA 228P  
LCI 31R STANMORE 81T

**LCI 81T STANMORE MISS 190X**

LCI 82H MISS KAHLUA 152M

Fall 2014 EPD's ~ Top of the breed in <i>blue</i>										
BW	WW	YW	Milk	TM	SC	FMI	Fat	REA	Marb	
6.0	55.6	91.7	19.3	47.1	0.7	129.5	-0.001	0.34	-0.15	
	25%	25%				45%	45%			

- A pigmented Total bull with extra length of body.





**34**

**LCI 100W TRUST 105A**

C02980873 LCI 105A Feb. 21 2013  
 BW: 105 Adj WWT: 771 Adj YWT: 1316

KCF BENNETT 3008 M326

**NJW 73S M326 TRUST 100W**

NJW P606 72N DAYDREAM 73S  
 LCI 157K RIBSTONE 4P

**LCI 4P RIBSTONE GAL 159W**

LCI 81F ANDIE 48K



**35**

**LCI 100W TRUST 123A**

C02980881 LCI 123A Feb. 18 2013  
 BW: 94 Adj WWT: 676 Adj YWT: 1155

KCF BENNETT 3008 M326

**NJW 73S M326 TRUST 100W**

NJW P606 72N DAYDREAM 73S  
 LBH 20J STANMORE 31R

**LCI 31R STANMORE LASS 150T**

LCI 6N ROBIN HOOD MISS 160R

Fall 2014 EPD's ~ Top of the breed in <i>blue</i>									
BW	WW	YW	Milk	TM	SC	FMI	Fat	REA	Marb
6.8	68.2	119.7	21.4	55.5	1.4	205.0	-0.043	0.88	0.14
	3%	1%	45%	15%		1%	3%	2%	25%

- This fellow has performance plus!
- WW 771 lb, Index 111; YW 1316 lb, Index 107.
- Very elite EPD's for WW, YW, and carcass.
- His dam is a good as a 4P daughter as we have.

Fall 2014 EPD's ~ Top of the breed in <i>blue</i>									
BW	WW	YW	Milk	TM	SC	FMI	Fat	REA	Marb
5.7	55.7	95.5	22.1	50.0	1.2	183.1	-0.042	0.56	0.13
	25%	15%	40%	30%		2%	4%	15%	25%

- A short marked Trust bull with extra performance and top carcass value.



**36**

**LCI 311W TOTAL 162A**

C02980927 LCI 162A Feb. 16 2013  
 BW: 95 Adj WWT: 658 Adj YWT: 1187

MJT CENTURY 264P

**MJT TOTAL ET 311W**

MJT MISS 14H CHARISMA 228P  
 LCI 31R KING STANMORE 159T

**LCI 159T STANMORE MISS 75W**

LCI 122P PANDA 58T

Fall 2014 EPD's ~ Top of the breed in <i>blue</i>									
BW	WW	YW	Milk	TM	SC	FMI	Fat	REA	Marb
5.4	51.0	85.3	20.0	45.5	0.7	122.2	0.003	0.17	-0.14
	40%	30%							

- A Total son out of a 159T daughter that is very easy fleshing, moderate framed and short marked.

**37**

**LCI 8116 CHINOOK 188A**

C02980939 LCI 188A Feb. 10 2013  
 BW: 92 Adj WWT: 722 Adj YWT: 1263

GH RAMBO 279R

**CHURCHILL RAMBO 8116U**

CL 1 DOMINETTE 825H  
 LCI 31R STANMORE 81T

**LCI 81T STANMORE LADY 105W**

LCI 122P PANDA 65T

Fall 2014 EPD's ~ Top of the breed in <i>blue</i>									
BW	WW	YW	Milk	TM	SC	FMI	Fat	REA	Marb
4.2	54.6	76.4	20.8	48.1	0.6	129.1	-0.010	0.42	-0.02
	25%			35%		40%	30%	30%	

- Has a light birth weight yet a 722 lb WW and 1263 lb YW.
- A good deep bodied bull.





**38**

**LCI KD 100W TRUST 193A**

C02980942 LCI 193A Feb. 03 2013  
 BW: 88 Adj WWT: 651 Adj YWT: 1167

KCF BENNETT 3008 M326

**NJW 73S M326 TRUST 100W**

NJW P606 72N DAYDREAM 73S  
 K 64H RIBSTONE LAD 157K

**LCI KD RUBY 124R**

LCI KD SAPHIRE 159H

Fall 2014 EPD's ~ Top of the breed in <i>blue</i>									
BW	WW	YW	Milk	TM	SC	FMI	Fat	REA	Marb
2.9	51.2	92.9	24.1	49.7	1.3	163.6	-0.016	0.67	0.19
	40%	20%	30%	30%	10%	10%	25%	10%	15%

- This fellow catches your eye at first sight.
- Light birth weight and out of a top 157K daughter.



**39**

**LCI 311W TOTAL 220A**

C02981109 LCI 220A Feb. 05 2013  
 BW: 85 Adj WWT: 699 Adj YWT: 1230

MJT CENTURY 264P

**MJT TOTAL ET 311W**

MJT MISS 14H CHARISMA 228P  
 JNHR RED STANDARD 68R

**LCI 68R RED STANDARD LADY 2W**

LCI 157K RIBSTONE GAL 54R

Fall 2014 EPD's ~ Top of the breed in <i>blue</i>									
BW	WW	YW	Milk	TM	SC	FMI	Fat	REA	Marb
4.5	50.5	83.3	18.9	44.2	0.7	130.4	-0.007	0.33	-0.11
	40%	35%				40%	35%	45%	

- A light birth weight Total son out of one of 68R's best daughters.
- Dam also raised a herd sire for Ovalyn Ranches.



**40**

**LCI 311W TOTAL 267A**

C02981125 LCI 267A Feb. 13 2013  
 BW: 104 Adj WWT: 740 Adj YWT: 1206

MJT CENTURY 264P

**MJT TOTAL ET 311W**

MJT MISS 14H CHARISMA 228P  
 LCI 6H WALDO 125P

**LCI 125P MISS WALDO 94T**

LCI 90M MRS KING 120P



Fall 2014 EPD's ~ Top of the breed in <i>blue</i>									
BW	WW	YW	Milk	TM	SC	FMI	Fat	REA	Marb
6.2	51.7	85.2	20.7	46.6	0.6	95.7	0.034	0.18	-0.05
	15%	15%	45%	25%	45%				

- A bull with a "presence" in style and muscle.
- A rock solid dam with bulls working at Coulee Crest Herefords, Daley Ranches, and WR Ranch.



**41**

**LCI 100W TRUST 633A**

C02981185 LCI 633A Feb. 13 2013  
 BW: 91 Adj WWT: 732 Adj YWT: 1269

KCF BENNETT 3008 M326

**NJW 73S M326 TRUST 100W**

NJW P606 72N DAYDREAM 73S  
 CHURCHILL RAMBO 8116U

**LCI KD CHINOOK LASS 255Y**

LCI 46P RIBSTONE LASS 114T

Fall 2014 EPD's ~ Top of the breed in <i>blue</i>									
BW	WW	YW	Milk	TM	SC	FMI	Fat	REA	Marb
4.7	58.1	97.4	25.3	54.4	1.0	173.4	-0.032	0.85	0.11
	15%	15%	25%	15%	25%	4%	10%	2%	30%

- A Trust son with a 91 lb BW yet a 732 lb WW and 1269 lb YW.
- Outstanding carcass EPD's on this bull.



**42**

**LCI 100W MAXIUM TRUST 137A**

C02980895 LCI 137A Feb. 21 2013  
 BW: 100 Adj WWT: 732 Adj YWT: 1257

**Polled**

KCF BENNETT 3008 M326

**NJW 73S M326 TRUST 100W**

NJW P606 72N DAYDREAM 73S  
 LCI BD OSWALD 6H

**BRABETH 6H MARINA 3L**

BRABETH 99D GEM 9G

*Fall 2014 EPD's ~ Top of the breed in **blue***

BW	WW	YW	Milk	TM	SC	FMI	Fat	REA	Marb
6.1	59.2	108.2	22.5	52.1	1.1	185.4	-0.031	0.67	0.14
	15%	4%	40%	20%	20%	2%		10%	25%

- A clean made Polled Trust son out of 3L, a cow that we purchased from Max and Gail Newby, that is still here and sound as a dollar, that's longevity!



**43**

**LCI 100W TRUST 163A**

C02980928 LCI 163A Feb. 22 2013  
 BW: 98 Adj WWT: 652 Adj YWT: 1139

**Polled**

KCF BENNETT 3008 M326

**NJW 73S M326 TRUST 100W**

NJW P606 72N DAYDREAM 73S  
 BP PANDA 122P

**LCI 122P PANDA LASS 30T**

LCI 82H KAHULA LADY 170N

*Fall 2014 EPD's ~ Top of the breed in **blue***

BW	WW	YW	Milk	TM	SC	FMI	Fat	REA	Marb
4.7	58.4	92.4	22.4	51.6	0.9	140.7	-0.010	0.84	0.00
	15%	20%		40%	35%	25%	30%	3%	

- A Polled Trust son that will increase WW and YW.
- A free moving bull that will cover a lot of cows.



**44**

**LCI 100W TRUST 608A**

C02981146 LCI 608A Feb. 12 2013  
 BW: 90 Adj WWT: 672 Adj YWT: 1072

**Polled**

KCF BENNETT 3008 M326

**NJW 73S M326 TRUST 100W**

NJW P606 72N DAYDREAM 73S  
 CHURCHILL RAMBO 8116U

**LCI KD CHINOOK LASS 272Y**

LCI KD CRYSTAL 7N

*Fall 2014 EPD's ~ Top of the breed in **blue***

BW	WW	YW	Milk	TM	SC	FMI	Fat	REA	Marb
3.8	52.0	79.1	23.7	49.7	0.9	154.7	-0.030	0.77	0.11
	35%	10%	35%	30%	35%	15%	10%	4%	30%

- A light birth weight Polled Trust bull with extra hair.
- Out of a top 8116 daughter.
- Can use this bull on heifers yet enough performance to use on cows.



**45**

**LCI 8116 CHINOOK 688A**

C02981265 LCI 688A March 29 2013  
 BW: 94 Adj WWT: 677 Adj YWT: 1153

GH RAMBO 279R

**CHURCHILL RAMBO 8116U**

CL 1 DOMINETTE 825H  
 LCI 157K RIBSTONE 79P

**LCI 79P RIBSTONE GAL 91S**

LCI SOUTH RIDGE LASS 159J

*Fall 2014 EPD's ~ Top of the breed in **blue***

BW	WW	YW	Milk	TM	SC	FMI	Fat	REA	Marb
4.0	43.3	64.6	18.3	40.0	0.7	138.3	-0.026	0.28	0.02
					25%				

- A end of March bull that is stout.
- His good dam is also the dam of Lot 25 bull in the sale.





### LCI 886Y CHINOOK 612A

C02981147 LCI 612A March 01 2013  
 BW: 92 Adj WWT: 725 Adj YWT: 1162

CHURCHILL RAMBO 8116U

### LCI WB CHINOOK 886Y

LCI WB 31R STANMORE LASS 859U  
 R 0041 NORTH STAR 40U

### LCI 40U NORTH STAR LASS 101Y

LCI 107R TAMO RIBSTONE GAL 11W

#### Fall 2014 EPD's ~ Top of the breed in *blue*

BW	WW	YW	Milk	TM	SC	FMI	Fat	REA	Marb
4.4	59.5	91.0	27.7	57.5	1.0	126.9	0.016	0.47	0.12
	15%	20%	15%	20%	25%			25%	30%

- Out of our own 886Y bull that we have used heavily on heifers.
- A 92 lb birth weight yet a 725 lb WW and 1162 lb YW.



### LCI 8116 CHINOOK 635A

C02981187 LCI 635A Feb. 11 2013  
 BW: 94 Adj WWT: 689 Adj YWT: 1144

GH RAMBO 279R

### CHURCHILL RAMBO 8116U

CL 1 DOMINETTE 825H  
 LCI 31R KING STANMORE 159T

### LCI 159T STANMORE LASS 185Y

LCI 125P WALDO LASS 7T

#### Fall 2014 EPD's ~ Top of the breed in *blue*

BW	WW	YW	Milk	TM	SC	FMI	Fat	REA	Marb
5.6	48.3	65.1	18.6	42.8	0.5	127.8	-0.026	0.34	-0.11
							10%	45%	

- A lighter birth weight which is characteristic of 8116, yet good performance.



### LCI 8116 CHINOOK 118A

C02980876 LCI 118A Feb. 25 2013  
 BW: 103 Adj WWT: 670 Adj YWT: 1166

GH RAMBO 279R

### CHURCHILL RAMBO 8116U

CL 1 DOMINETTE 825H  
 LCI 6H WALDO 125P

### LCI 125P MISS WALDO 89T

LCI 157K RIBSTONE LASS 74P

#### Fall 2014 EPD's ~ Top of the breed in *blue*

BW	WW	YW	Milk	TM	SC	FMI	Fat	REA	Marb
5.0	47.5	70.7	20.7	44.5	0.6	117.5	-0.001	0.37	-0.01
							45%	40%	

- A 8116 son out of a 125P cow that is a producer as she has a Sensation bull calf Lot 31 in the sale.

## Angus Reference Herdsires



### CONNEALY CONSENSUS 7229

IMP 9122W 1593730 Jan. 15, 2009

KMK ALLIANCE 6595 187

### CONNEALY CONSENSUS

BLINDA OF CONANGA 004  
 WOODHILL ADMIRAL 77K

### BLUE LILLY OF CONANGA 16

BLUE CASH OF CONANGA 6020

#### Based on Fall 2014 EPD's Black Angus (PEd Est.)

	Birth Weight	Weaning Weight	YRL Weight	Milk	TM	C.E.	MCE	REA	Carcass Weight	Marb.	Fat
EPD	2.2	64	104	35	67	4.0	6.0	0.89	51	0.99	-0.011
Top		10%	5%	5%	1%			5%	5%	5%	

A heavily used bull in the USA and Canada, in over 130 herds. Powerful stature, strong epds and outstanding phenotype. A sire that is proven to be a reliable sire, producing low birth weights with excellent weaning, yearling and terrific carcass value.

# Angus Reference Herdsires



## LCI 5T TIGER 83Y

LCI 83Y 1 617548 Jan. 28, 2011  
 BW: 85 AWW: 754 AYW: 1349

HF KODIAK 5R

## HF TIGER 5T

HF ECHO 84R  
 WESTERN FREEDOM 505

## LCI 5R FREEDOM GAL 215W

LCI NEW FRONTIER LADY 163P

Out of the famous TIGER bull! 83Y puts extra pounds on all his progeny. He's in the top 3% of the breed for WW, 1% for YW, yet his calves come easy and his BW epd is lighter than the breed average. Tiger daughters are proving to be very productive in our herd.

Based on Fall 2014 EPD's Black Angus (PEd Est.)											
	Birth Weight	Weaning Weight	YRL Weight	Milk	TM	C.E.	MCE	REA	Carcass Weight	Marb.	Fat
EPD	2.6	61	114	23	54	4.0	5.0	0.22	45	0.16	-0.021
Top	45%	3%	1%	20%	6%	40%			3%		4%



## LCI 200W NETWORKH 137Z

LCI 137Z 1690684 Feb. 14, 2012  
 BW: 94 AWW: 1017 AYW: 1480

S A V NETWORK 4200

## PAHL NETWORK 200W

PAHL 14C TIBBIE 52N  
 WESTERN FREEDOM 505

## LCI MISS FREEDOM GAL 152T

LCI JEWELS ET 67R

A grandson of Networkh that has set the records around the world. 137Z is out of a top Freedom 505 daughter. He excels in performance, milk and has a top marbling EPD. Notice the good 137Z daughters that have sale bull calves in the sale, they are keepers! An awesome group of sale bulls in the sale out of 137Z.

Based on Fall 2014 EPD's Black Angus (PEd Est.)											
	Birth Weight	Weaning Weight	YRL Weight	Milk	TM	C.E.	MCE	REA	Carcass Weight	Marb.	Fat
EPD	5.4	52	91	24	50	0.0	6.0	0.19	35	0.37	-0.019
Top		20%	15%	15%	15%				15%	30%	6%



## LCI 5T TIGER 167Z

LCI 167Z 1617548 Feb. 08, 2012  
 BW: 82 AWW: 958 AYW: 1440

HF KODIAK 5R

## HF TIGER 5T

HF ECHO 84R  
 B/R NEW FRONTIER 095

## LCI NEW FRONTIER LADY 163P

GH MONARCH ROSE 18K

This bull has been used here very successfully on our heifers. A BW EPD of +1.6 puts him in the top 20% of the breed but has explosive growth in his calves. Notice his great numbers for top of the breed. We love his structure, clean made smooth shoulders, yet thick and muscular. He could be a show bull!

Based on Fall 2014 EPD's Black Angus (PEd Est.)											
	Birth Weight	Weaning Weight	YRL Weight	Milk	TM	C.E.	MCE	REA	Carcass Weight	Marb.	Fat
EPD	1.6	53	97	21	48	7.0	7.0	0.14	32	0.31	-0.010
Top	20%	15%	10%	35%	20%	15%	40%		20%	40%	10%





**49**

**LCI 200W NETWORK 678A**

1724909 LCI 678A April 04, 2013  
 BW: 93 AWW: 877 AYW: 1360

S A V NET WORTH 4200

**PAHL NETWORK 200W**

PAHL 14C TIBBIE 52N  
 WESTERN FREEDOM 505

**LCI MISS FREEDOM 105T**

LCI NEW FRONTIER LADY 153P



**50**

**LCI 200W NETWORK 250A**

1724877 LCI 250A March 4, 2013  
 BW: 81 AWW: 755 AYW: 1231

S A V NET WORTH 4200

**PAHL NETWORK 200W**

PAHL 14C TIBBIE 52N  
 BENCHMARK EMULATION EXT

**LCI 45S TIBBIE 129U**

LCI 9399 PRIDE 77S

Fall 2014 EPD's Black Angus									
BW	WW	YW	Milk	TM	CE	REA	Carcass Weight	Marb.	Fat
4.6	55	92	25	53	2.0	0.26	35	0.37	-0.020
	10%	15%	10%	8%		45%	15%	30%	5%

- A powerful bull that will stand out. WW of 877 lbs. And YW of 1360 lbs.
- EPD's at the top of the breed for performance, milk and carcass.
- 105T consistently raises the good ones.

Fall 2014 EPD's Black Angus									
BW	WW	YW	Milk	TM	CE	REA	Carcass Weight	Marb.	Fat
1.2	42	74	26	47	9.0	0.43	33	0.45	0.019
15%			10%	20%	9%	20%	15%	20%	

- A 81 lb BW, yet a 755 lb WW and 1231 lb YW.
- Top of the breed epds for milk and carcass.
- Could be used on heifers very successfully.



**51**

**LCI 200W NETWORK 255A**

1724866 LCI 255A Feb. 22, 2013  
 BW: 90 AWW: 753 AYW: 1192

S A V NET WORTH 4200

**PAHL NETWORK 200W**

PAHL 14C TIBBIE 52N  
 LCI 505 FREEDOM 109T

**LCI 109T FREEDOM GAL 129W**

LCI 878 HOPE 46S

Fall 2014 EPD's Black Angus									
BW	WW	YW	Milk	TM	CE	REA	Carcass Weight	Marb.	Fat
4.4	43	71	22	44	3.0	0.31	29	0.38	-0.009
			30%	35%		35%	25%	30%	15%

- A solid herd bull prospect.
- 129W is a consistent producer for us and has a top bull calf in the sale also.



**52**

**LCIJ LIMESTONE BLU RAY 758A**

1728013 LCIJ 758A March 06, 2013  
 BW: 83 AWW: 772 AYW: 1248

BC 7022 RAVEN 7965

**LIMESTONE BLU RAY W661**

C&H EVER ENTENSE 4036  
 SOUTHLAND FREE STYLE 163U

**SOUTHLAND ERICA 64Y**

SOUTHLAND ERICA 206S

Fall 2014 EPD's Black Angus									
BW	WW	YW	Milk	TM	CE	REA	Carcass Weight	Marb.	Fat
3.6	43	71	21	43	3.0	0.38	19	0.35	0.007
			35%	40%		25%		35%	40%

- Josh bought 758A in dam from the good Southland herd.
- A bull with extra hair, a lighter birth weight and good performance.



**LCI 200W NETWORK 288A**  
 1724847 LCI 288A Feb. 09, 2013  
 BW: 90 AWW: 714 AYW: 1198

S A V NET WORTH 4200

**PAHL NETWORK 200W**  
 PAHL 14C TIBBIE 52N  
 COLDSTREAM DOMINATOR 7G

**LCI ANCHOR ROSE ET 75R**  
 GH ANCHOR ROSE 3G

Fall 2014 EPD's Black Angus										
BW	WW	YW	Milk	TM	CE	REA	Carcass Weight	Marb.	Fat	
4.0	34	60	20	37	2.0	0.22	25	0.33	0.008	
			40%				40%	40%	45%	

- The dam of 288A is a flush daughter of 3G who was Champion Female at Lethbridge and Farm Fair in Edmonton.
- 75R consistently produces for us.



**LCI 200W NETWORK 202A**  
 1724887 LCI 202A March 11, 2013  
 BW: 84 AWW: 704 AYW: 1188

S A V NET WORTH 4200

**PAHL NETWORK 200W**  
 PAHL 14C TIBBIE 52N  
 THREE TREES PRIME CUT 0145

**LCI 0145 LINDA 92S**  
 LCI 6G LINDA 1N

Fall 2014 EPD's Black Angus										
BW	WW	YW	Milk	TM	CE	REA	Carcass Weight	Marb.	Fat	
2.2	37	67	21	40	6.0	0.25	26	0.41	0.039	
			35%		25%	45%	35%	25%		

- A light birth weight, top milk, and good epd for marbling.
- A 200W son out of a flush daughter of our Linda cow.
- Expect superb females with this bull and he can be used on heifers.



**LCI 200W NETWORK 293A**  
 1724869 LCI 293A Feb. 23, 2013  
 BW: 88 AWW: 717 AYW: 1171

S A V NET WORTH 4200

**PAHL NETWORK 200W**  
 PAHL 14C TIBBIE 52N  
 KDF POWERLINE 28N

**HEROINE OF PEAK DOT 485S**  
 HEROINE OF PEAK DOT 553K

Fall 2014 EPD's Black Angus										
BW	WW	YW	Milk	TM	CE	REA	Carcass Weight	Marb.	Fat	
3.5	37	65	19	38	2.0	0.14	20	0.33	0.012	
			50%					40%		

- A 88 lb birth weight bull out of a Peak Dot cow we think is the right kind with a great disposition.



**LCI 200W NETWORK 296A**  
 1724896 LCI 296A March 15, 2013  
 BW: 92 AWW: 745 AYW: 1296

S A V NET WORTH 4200

**PAHL NETWORK 200W**  
 PAHL 14C TIBBIE 52N  
 BON VIEW NEW DESIGN 878

**LCI 878 HOPE 46S**  
 LCI HOPE 3L

Fall 2014 EPD's Black Angus										
BW	WW	YW	Milk	TM	CE	REA	Carcass Weight	Marb.	Fat	
3.5	39	72	24	44	4.0	0.28	26	0.41	0.003	
			15%	35%	40%	40%	35%	25%	35%	

- Out of one of our best cows, 46S has raised herd sires for us.
- 878 sire was used heavy in the USA.





**LCI 176Y TIGER 228A**

1724898 LCI 228A March 16, 2013  
 BW: 98 AWW: 747 AYW: 1306

HF TIGER 5T

**LCI 5T TIGER 176Y**

LCI NEW FRONTIER LADY 163P  
 CUDLOBE YELLOWSTONE 1'03

**LCI JASMINE ET 53R**

LCI FAITH 4L

Fall 2014 EPD's Black Angus									
BW	WW	YW	Milk	TM	CE	REA	Carcass Weight	Marb.	Fat
5.0	43	85	18	40	-2.0	-	-	-	-
	50%	25%		50%					

- A Tiger son with good performance out of a Yellowstone cow that has always brought home the good ones.
- A late March bull.

**Angus Bull Calves** .....



**LCI CONSENSUS 200B**

1798515 LCI 200B Feb. 08, 2014  
 BW: 80 AWW: 873

CONNEALY CONSENSUS

**CONNEALY CONSENSUS 7229**

BLUE LILLY OF CONANGA 16  
 LCI 9015 STRATEGY 190W

**LCI 190W STRATEGY MISS 193Z**

LCI MISS FREEDOM 132T



**LCI CONSENSUS 78B**

1798558 LCI 78B Feb. 23, 2014  
 BW: 97 AWW: 826

CONNEALY CONSENSUS

**CONNEALY CONSENSUS 7229**

BLUE LILLY OF CONANGA 16  
 HF TIGER 5T

**LCI TIGER MISS 60Y**

LCI 109T FREEDOM GAL 163W

Fall 2014 EPD's Black Angus									
BW	WW	YW	Milk	TM	CE	REA	Carcass Weight	Marb.	Fat
2.7	62	101	28	56	3.0	0.55	41	0.67	-0.007
	2%	6%	4%	4%		10%	6%	6%	15%

Fall 2014 EPD's Black Angus									
BW	WW	YW	Milk	TM	CE	REA	Carcass Weight	Marb.	Fat
4.3	62	105	28	58	4.0	0.41	43	0.60	-0.016
	2%	3%	4%	2%	40%	20%	4%	9%	8%

- A Consensus calf to compare to all others.
- Light birth weight yet a 873 lb WW with an Index of 113 in our herd.
- Look at his epds - they are breed leading across the board!
- Use this fellow on heifers or cows.

- A Consensus x Tiger means performance, milk, and carcass.
- Breed leading epds across the board.



**LCI CONSENSUS 101B**

1798525 LCI 101B Feb. 11, 2014  
 BW: 89 AWW: 799

CONNEALY CONSENSUS

**CONNEALY CONSENSUS 7229**

BLUE LILLY OF CONANGA 16  
 THREE TREES PRIME CUT 0145

**LCI 0145 LINDA 30S**

LCI 6G LINDA 1N



Fall 2014 EPD's Black Angus									
BW	WW	YW	Milk	TM	CE	REA	Carcass Weight	Marb.	Fat
2.1	52	89	26	52	4.0	0.46	35	0.67	0.037
30%	20%	20%	10%	10%	40%	15%	15%	6%	

- Super thick with a lot of hindquarter, typical of the Consensus cattle.
- Last years 30S bull sold to YU Cattle Company and in 2012 it sold to Circle Cross Ranch.



**LCI 167Z TIGER 189B**

1798542 LCI 189B Feb. 16, 2014  
 BW: 84 AWW: 814

HF TIGER 5T

**LCI 5T TIGER 167Z**

LCI NEW FRONTIER LADY 163P  
 LCI 26K OBJECTIVE 105X

**LCI 105X OBJECTIVE MISS 90Z**

LCI 102T PRIME CUT MISS 155X



Fall 2014 EPD's Black Angus									
BW	WW	YW	Milk	TM	CE	REA	Carcass Weight	Marb.	Fat
2.7	55	94	21	47	5.5	0.19	25	0.34	0.001
45%	10%	10%	35%	20%	25%		40%	35%	30%

- Light birth weight yet good performance.
- A sweet young mother cow with a very clean well balanced udder.



**LCIB TIGER 207B**

1798591 LCIB 207B Feb. 26, 2014  
 BW: 84 AWW: 829

HF TIGER 5T

**LCI 5T TIGER 167Z**

LCI NEW FRONTIER LADY 163P  
 PAHL NETWORK 200W

**LCIB 200W NETWORK MISS 117Z**

EBON HILL CJ BLACKCAP 36\*06



Fall 2014 EPD's Black Angus									
BW	WW	YW	Milk	TM	CE	REA	Carcass Weight	Marb.	Fat
3.0	48	87	21	42	4.0	0.19	28	0.28	-0.007
	30%	25%	35%	40%	40%		30%		15%

- Light birth weight, big time performance and top of the breed for milk.
- The dam 117Z has proven her place in our herd with this first calf.



**LCI 137Z NETWORK 275B**

1798580 LCI 275B March 18 2014  
 BW: 89 AWW: 879

PAHL NETWORK 200W

**LCI 200W NETWORK 137Z**

LCI MISS FREEDOM 152T  
 LCI 9015 STRATEGY 190W

**LCI STRATEGY GAL 110Y**

LCI 102T PRIME CUT MISS 251W



Fall 2014 EPD's Black Angus									
BW	WW	YW	Milk	TM	CE	REA	Carcass Weight	Marb.	Fat
4.7	56	97	25	52	-3.0	0.24	32	0.36	-0.013
	10%	10%	10%	10%		45%	20%	30%	10%

- An outstanding WW of 879 lbs, index 113 yet he has an 89 lb BW.
- He will be one of the heavy weights on sale day.
- Top epds for WW, YW and Maternal.





**LCI 83Y TIGER 257B**

1798576 LCI 257B  
 BW: 96 AWW: 823

March 12, 2014

HF TIGER 5T

**LCI 5T TIGER 83Y**

LCI 5R FREEDOM GAL 215W  
 CUBLOBE YELLOWSTONE 1'03

**LCI JASMINE ET 53R**

LCI FAITH 4L



**LCI CONSENSUS 32B**

1798560 LCI 32B  
 BW: 93 AWW: 812

Feb. 23, 2014

CONNEALY CONSENSUS

**CONNEALY CONSENSUS 7229**

BLUE LILLY OF CONANGA 16  
 IRONWOOD NEW LEVEL

**LCI 9399 NEW LEVEL 113S**

LCI DESTINY 1M



Fall 2014 EPD's Black Angus									
BW	WW	YW	Milk	TM	CE	REA	Carcass Weight	Marb.	Fat
5.1	50	94	19	43	-2.5	0.06	31	0.37	-0.012
	25%	10%		40%			20%	30%	10%

Fall 2014 EPD's Black Angus									
BW	WW	YW	Milk	TM	CE	REA	Carcass Weight	Marb.	Fat
2.9	55	88	27	53	4.0	0.44	31	0.68	0.015
	10%	20%	7%	8%	40%	20%	20%	6%	

- Performance built into this calf with Tiger and Yellowstone in the pedigree.
- 53R is a sound producer in our herd.

- This Consensus bull is out of a favorite New Level female that put a good replacement into the herd last year.
- One could build a herd of great females with this bull!



**LCI 83Y TIGER 2B**

1798540 LCI 2B  
 BW: 97 AWW: 841

Feb. 15, 2014

HF TIGER 5T

**LCI 5T TIGER 83Y**

LCI 5R FREEDOM GAL 215W  
 LCI 0145 PRIME CUT 102T

**LCI 102T PRIME CUT MISS 155X**

LCI MISS FREEDOM 132T



**LCI 167Z TIGER 208B**

1798564 LCI 208B  
 BW: 89 AWW: 788

Feb. 28, 2014

HF TIGER 5T

**LCI 5T TIGER 167Z**

LCI NEW FRONTIER LADY 163P  
 PAHL NETWORK 200W

**LCI 200W NETWORK 112Z**

LCI 102T PRIME CUT MISS 96W

Fall 2014 EPD's Black Angus									
BW	WW	YW	Milk	TM	CE	REA	Carcass Weight	Marb.	Fat
4.9	62	107	19	46	3.5	0.22	35	0.11	0.014
	2%	2%		25%	40%		15%		

Fall 2014 EPD's Black Angus									
BW	WW	YW	Milk	TM	CE	REA	Carcass Weight	Marb.	Fat
3.7	51	92	20	44	5.5	0.22	30	0.31	0.013
	20%	15%	40%	35%	25%		25%	40%	

- This bull will increase WW and YW in a herd.
- 155X last year's good Tiger son sold to Rob and Audrey Taylor.

- This calf has a 788 lb WW out of a first calf 200W daughter and still only a 89 lb birth weight.



**68**

**LCI 83Y TIGER 67B**

1798549 LCI 67B  
BW: 97 AWW: 770

Feb. 18, 2014

HF TIGER 5T

**LCI 5T TIGER 83Y**

LCI 5R FREEDOM GAL 215W  
EBON HILL 1531 AMBUSH 153'04

**LCI AMBUSH GAL 123U**

EBON HILL CJ ERICA 38'06



**69**

**LCI 83Y TIGER 29B**

1798532 LCI 29B  
BW: 92 AWW: 806

Feb. 13, 2014

HF TIGER 5T

**LCI 5T TIGER 83Y**

LCI 5R FREEDOM GAL 215W  
LCI 0145 PRIME CUT 102T

**LCI 102T PRIME CUT MISS 251W**

LCI MISTY ET 57R

Fall 2014 EPD's Black Angus									
BW	WW	YW	Milk	TM	CE	REA	Carcass Weight	Marb.	Fat
0.5	45	81	19	44	4.0	0.21	26	0.27	0.001
10%	45%	35%		35%	40%		35%		30%

- Extra long bodied yet good thickness.
- 123U came in dam from the famous Ebon Hill herd.

Fall 2014 EPD's Black Angus									
BW	WW	YW	Milk	TM	CE	REA	Carcass Weight	Marb.	Fat
3.5	53	97	22	48	1.0	0.15	33	0.25	0.001
	15%	10%	30%	20%			15%		30%

- As long as a freight train.
- Big WW and out of a good Prime Cut female.

**70**

**LCI 137Z NETWORK 268B**

1798581 LCI 268B  
BW: 89 AWW: 826

March 24 2014

PAHL NETWORK 200W

**LCI 200W NETWORK 137Z**

LCI MISS FREEDOM 152T  
LCI 0145 PRIME CUT 102T

**LCI PRIME CUT LASS 173Y**

LCI 9399 LINDA 126S

**71**

**LCI 167Z TIGER 202B**

1798537 LCI 202B  
BW: 80 AWW: 744

Feb. 15, 2014

HF TIGER 5T

**LCI 5T TIGER 167Z**

LCI NEW FRONTIER LADY 163P  
PAHL NETWORK 200W

**LCI 200W NETWORK MISS 228Z**

LCI 109T FREEDOM GAL 221W

Fall 2014 EPD's Black Angus									
BW	WW	YW	Milk	TM	CE	REA	Carcass Weight	Marb.	Fat
3.8	46	81	20	42	1.0	0.21	23	0.30	0.034
	40%	35%	40%	40%				45%	

- A late March bull calf.
- A light birth weight and a 826 lb WW.

Fall 2014 EPD's Black Angus									
BW	WW	YW	Milk	TM	CE	REA	Carcass Weight	Marb.	Fat
1.3	44	80	20	-	-	-	-	-	-
15%		40%	40%						

- Light birth weight and good performance.
- Out of a Network first calf heifer that has done a fine job on her first calf.
- Could easily be used on heifers.

**72**

**LCI 83Y TIGER 83B**

1798553 LCI 83B  
BW: 94 AWW: 796

Feb. 21, 2014

HF TIGER 5T

**LCI 5T TIGER 83Y**

LCI 5R FREEDOM GAL 215W  
WINDOVER COMMITMENT 2K

**WILLDON VALENTINE MERCEDES 70M**

WILLDON VALENTINE ROSHUMBA 3G

Fall 2014 EPD's Black Angus									
BW	WW	YW	Milk	TM	CE	REA	Carcass Weight	Marb.	Fat
3.8	42	79	21	42	-0.5	0.11	23	0.10	-0.011
		40%	35%	40%					10%

- A heavy weight that is built like a brick.
- 70M has as much volume as any in the herd and does not miss bringing home sale favorites every year. Last year's bull sold to Darwin and Brad Balog.



**LCI 137Z NETWORTH 270B**1798579 LCI 270B March 18 2014  
BW: 83 AWW: 774

PAHL NETWORTH 200W

**LCI 200W NETWORTH 137Z**LCI MISS FREEDOM 152T  
LCI 0145 PRIME CUT 102T**LCI PRIME CUT LASS 220Y**

WILLDON VALENTINE MERCEDES 70M

Fall 2014 EPD's Black Angus									
BW	WW	YW	Milk	TM	CE	REA	Carcass Weight	Marb.	Fat
2.5	39	72	20	40	0.0	-	-	-	-
40%			40%						

- A March Network bull.
- A light birth weight and performance.

**LCIB 167Z TIGER 215B**1798587 LCIB 215B Feb. 13, 2014  
BW: 87 AWW: 770

HF TIGER 5T

**LCI 5T TIGER 167Z**LCI NEW FRONTIER LADY 163P  
LCI 9015 STRATEGY 190W**LCIB 190W STRATEGY MISS 128Z**

EBON HILL BLACKCAP 390'05

Fall 2014 EPD's Black Angus									
BW	WW	YW	Milk	TM	CE	REA	Carcass Weight	Marb.	Fat
3.2	50	86	20	45	3.0	0.08	26	0.37	-0.009
	25%	25%	40%	30%	45%		35%	30%	15%

- Strategy females are some of our best females.
- This calf has top epds for WW, YW and Milk.

**LCIB 83Y TIGER 351B**1798589 LCIB 351B Feb. 22, 2014  
BW: 94 AWW: 823

HF TIGER 5T

**LCI 5T TIGER 83Y**LCI 5R FREEDOM GAL 215W  
LCI 0145 PRIME CUT 102T**LCIB PRIME CUT MISS 382X**

EBON HILL BLACKCAP 390'05

Fall 2014 EPD's Black Angus									
BW	WW	YW	Milk	TM	CE	REA	Carcass Weight	Marb.	Fat
3.9	52	93	20	45	1.5	0.20	29	0.19	0.023
	20%	15%	40%	30%			25%		

- A performance calf that will stand out sale day.
- 382X does it consistently and Many Island Grazing bought her calf last year.

**LCI 83Y TIGER 81B**1798512 LCI 81B Feb. 07, 2014  
BW: 89 AWW: 747

HF TIGER 5T

**LCI 5T TIGER 83Y**LCI 5R FREEDOM GAL 215W  
LCI 505 FREEDOM 109T**LCI 109T FREEDOM MISS 196X**

LCI JODIE ET 104R

Fall 2014 EPD's Black Angus									
BW	WW	YW	Milk	TM	CE	REA	Carcass Weight	Marb.	Fat
3.6	47	88	17	41	1.0	0.07	34	0.13	-0.040
	35%	20%		45%			15%		1%

**LCI 167Z TIGER 192B**1798570 LCI 192B March 8, 2014  
BW: 65 AWW: 774

HF TIGER 5T

**LCI 5T TIGER 167Z**LCI NEW FRONTIER LADY 163P  
PAHL NETWORTH 200W**LCI 200W NETWORTH MISS 233W**

LCI 5R FREEDOM GAL 180W

Fall 2014 EPD's Black Angus									
BW	WW	YW	Milk	TM	CE	REA	Carcass Weight	Marb.	Fat
-2.1	37	75	20	41	9.5	0.00	27	0.33	-0.019
1%			40%	45%	6%		35%	40%	6%

- Has a super light birth weight.
- 167Z calves not only are light birth weight but have amazing vigor and are up sucking early.
- His birth weight epd is in the top 1% of the breed.

**LCI 83Y TIGER 33B**1798527 LCI 33B Feb. 12, 2014  
BW: 84 AWW: 797

HF TIGER 5T

**LCI 5T TIGER 83Y**LCI 5R FREEDOM GAL 215W  
S S OBJECTIVE T510 OT26**LCI 26K OBJECTIVE MISS 123X**

LCI NEW FRONTIER LADY 45P

Fall 2014 EPD's Black Angus									
BW	WW	YW	Milk	TM	CE	REA	Carcass Weight	Marb.	Fat
1.3	54	98	20	48	5.0	0.12	27	0.38	-0.028
15%	15%	9%	40%	20%	30%		35%	30%	2%

- Extra long bodied that is characteristic of 83Y.
- Lighter birth weight coming from Tiger and Objective.
- Top EPDs for BW, WW, YW and Milk.

**LCI 83Y TIGER 68B**1798548 LCI 68B Feb. 18, 2014  
BW: 86 AWW: 770

HF TIGER 5T

**LCI 5T TIGER 83Y**LCI 5R FREEDOM GAL 215W  
BENCHMARK EMULATION EXT**LCI 45S TIBBIE 129U**

LCI 9399 PRIDE 77S

Fall 2014 EPD's Black Angus									
BW	WW	YW	Milk	TM	CE	REA	Carcass Weight	Marb.	Fat
0.8	47	86	24	50	6.0	0.30	38	0.26	0.002
10%	35%	25%	15%	15%	25%	35%	10%		30%

- I especially like this Emulation mother cow, she has a beautiful udder and nice clean profile.
- Top EPD's for BW, WW, YW, Milk and Carcass.

Fall 2014 EPD's Black Angus									
BW	WW	YW	Milk	TM	CE	REA	Carcass Weight	Marb.	Fat
3.6	47	88	17	41	1.0	0.07	34	0.13	-0.040
	35%	20%		45%			15%		1%

- 83Y puts extra performance in each of his calves and I'm sure 81B will pass it onto his progeny.

**LCI 137Z NETWORK 39B**1798531 LCI 39B Feb. 13 2014  
BW: 65 AWW: 781

PAHL NETWORK 200W

**LCI 200W NETWORK 137Z**LCI MISS FREEDOM 152T  
LCI 0145 PRIME CUT 102T**LCI PRIME CUT LASS 127Y**

ANNIE K OF PEAK DOT 434S

**LCI 83Y TIGER 37B**1798550 LCI 37B Feb. 19, 2014  
BW: 96 AWW: 784

HF TIGER 5T

**LCI 5T TIGER 83Y**LCI 5R FREEDOM GAL 215W  
LCI 505 FREEDOM 109T**LCI 109T PD FREEDOM GAL 209W**

HEROINE OF PEAK DOT 485S

**Fall 2014 EPD's Black Angus**

BW	WW	YW	Milk	TM	CE	REA	Carcass Weight	Marb.	Fat
3.7	46	82	20	43	3.0	0.16	24	0.27	0.010
	40%	35%	40%	40%			45%		

- A real light birth weight yet good performance.
- He will fit into anywhere you need him in your program.

**LCI 137Z NETWORK 98B**1798552 LCI 98B Feb. 21 2014  
BW: 96 AWW: 784

PAHL NETWORK 200W

**LCI 200W NETWORK 137Z**LCI MISS FREEDOM 152T  
LCI 0145 PRIME CUT 102T**LCI PRIME CUT LASS 159Y**

LCI JODIE ET 104R

**Fall 2014 EPD's Black Angus**

BW	WW	YW	Milk	TM	CE	REA	Carcass Weight	Marb.	Fat
6.0	46	81	18	40	-2.5	0.08	25	0.28	0.014
	40%	35%					40%		

- An extra thick meaty Network son.
- This not only comes from Network but also Prime Cut.

**LCIB 83Y TIGER 361B**1798590 LCIB 361B Feb. 23, 2014  
BW: 95 AWW: 792

HF TIGER 5T

**LCI 5T TIGER 83Y**LCI 5R FREEDOM GAL 215W  
LCI 0145 PRIME CUT 102T**LCIB PRIME CUT MISS 151X**

EBON HILL ELAINE 44'05

**Fall 2014 EPD's Black Angus**

BW	WW	YW	Milk	TM	CE	REA	Carcass Weight	Marb.	Fat
3.8	53	92	18	42	4.0	0.22	26	0.11	0.011
	15%	15%		40%	40%		35%		

- 83Y x Prime Cut has worked well giving us performance in a thick volume package

**LCI 137Z NETWORKWORTH 89B**1798555 LCI 89B Feb. 22 2014  
BW: 89 AWW: 788

PAHL NETWORK 200W

**LCI 200W NETWORK 137Z**LCI MISS FREEDOM 152T  
LCI 0145 PRIME CUT 102T**LCI PRIME CUT LASS 191Y**

LCI NEW FRONTIER LADY 45P

**Fall 2014 EPD's Black Angus**

BW	WW	YW	Milk	TM	CE	REA	Carcass Weight	Marb.	Fat
3.7	46	80	18	41	1.5	-	-	-	-
	40%	40%		45%					

- Network and Prime Cut spells thickness, muscle and easy fleshing and 89B is just that.

**LCI 83Y TIGER 95B**1798544 LCI 95B Feb. 16, 2014  
BW: 94 AWW: 784

HF TIGER 5T

**LCI 5T TIGER 83Y**LCI 5R FREEDOM GAL 215W  
EBON HILL 7080 DATELINE 68'06**LCI MISS DATELINE 68U**

EBON HILL BLACKCAP 9'05

**Fall 2014 EPD's Black Angus**

BW	WW	YW	Milk	TM	CE	REA	Carcass Weight	Marb.	Fat
3.7	55	102	20	47	3.0	0.14	33	0.16	-0.012
	10%	5%	40%	20%			15%		10%

- 68U came in dam from Ebon Hill and she has been a good investment.
- Top of the breed for WW, YW and Milk.

**LCI 167Z TIGER 216B**1798514 LCI 216B Feb. 08, 2014  
BW: 76 AWW: 712

HF TIGER 5T

**LCI 5T TIGER 167Z**LCI NEW FRONTIER LADY 163P  
PAHL NETWORK 200W**LCI 200W NETWORK MISS 236Z**

LCI 109T FREEDOM GAL 118W

**Fall 2014 EPD's Black Angus**

BW	WW	YW	Milk	TM	CE	REA	Carcass Weight	Marb.	Fat
0.2	40	77	23	-	-	-	-	-	-
8%		45%	20%						

- A sure fire heifer bull out of 167Z that we have used very successfully.
- Again out of a Network first calver.



**LCI 83Y TIGER 60B**1798551 LCI 60B  
BW: 91 AWW: 773

Feb. 19, 2014

HF TIGER 5T

**LCI 5T TIGER 83Y**LCI 5R FREEDOM GAL 215W  
KDF POWERLINE 28N**HEROINE OF PEAK DOT 485S**

HEROINE OF PEAK DOT 553K

Fall 2014 EPD's Black Angus									
BW	WW	YW	Milk	TM	CE	REA	Carcass Weight	Marb.	Fat
3.3	46	86	17	40	0.5	0.01	25	0.14	-0.005
	40%	25%					40%		20%

- This fellow has a great disposition like his Peak Dot mother.

**LCI 167Z TIGER 2232B**1798519 LCI 2232B  
BW: 94 AWW: 771

Feb. 10, 2014

HF TIGER 5T

**LCI 5T TIGER 167Z**LCI NEW FRONTIER LADY 163P  
LCI 26K OBJECTIVE 105X**LCI 105X OBJECTIVE MISS 69Z**

LCI 26K OBJECTIVE MISS 123X

Fall 2014 EPD's Black Angus									
BW	WW	YW	Milk	TM	CE	REA	Carcass Weight	Marb.	Fat
4.2	54	89	21	47	6.0	0.08	19	0.54	-0.019
	15%	20%	35%	20%	25%			10%	6%

- 69Z is double bred Objective that means extra milk in a perfect udder.
- Top EPDs for WW, YW and Milk.

**LCI 83Y TIGER 255B**1798578 LCI 255B  
BW: 92 AWW: 768

March 17, 2014

HF TIGER 5T

**LCI 5T TIGER 83Y**LCI 5R FREEDOM GAL 215W  
S A R NEW TREND 4100 2080**ANNIE K OF PEAK DOT 434S**

DOUBLE AA ANNIE K 213'97

Fall 2014 EPD's Black Angus									
BW	WW	YW	Milk	TM	CE	REA	Carcass Weight	Marb.	Fat
3.2	46	88	19	44	4.0	0.21	29	0.02	-0.02
	40%	3%		40%	40%		25%		10%

- A March calf out of a larger framed Peak Dot cow with a nice level udder.

**LCI 83Y TIGER 100B**1798523 LCI 100B  
BW: 106 AWW: 852

Feb. 11, 2014

HF TIGER 5T

**LCI 5T TIGER 83Y**LCI 5R FREEDOM GAL 215W  
LCI 505 FREEDOM 109T**LCI 109T FREEDOM GAL 196W**

EBON HILL BLACKCAP 290'05

Fall 2014 EPD's Black Angus									
BW	WW	YW	Milk	TM	CE	REA	Carcass Weight	Marb.	Fat
6.5	62	106	18	43	3.5	0.15	34	0.20	-0.028
	2%	3%		40%	40%		15%		2%

- A 852 lb WW and very elite performance EPD's.
- He will increase WW and YW in your calf crops.

**LCI 83Y TIGER 28B**1798511 LCI 28B  
BW: 80 AWW: 746

Feb. 05, 2014

HF TIGER 5T

**LCI 5T TIGER 83Y**LCI 5R FREEDOM GAL 215W  
LCI 0145 PRIME CUT 102T**LCI 102T PRIME CUT MISS 96W**

LCI MISS FREEDOM 54T

Fall 2014 EPD's Black Angus									
BW	WW	YW	Milk	TM	CE	REA	Carcass Weight	Marb.	Fat
0.7	47	89	17	42	4.5	0.08	30	0.18	0.006
	10%	35%	20%	40%	35%		25%		40%

- Light birth weight.
- Top epds for BW, WW and YW.
- 28B will be one of the stoutest calves come sale day.

**LCI 83Y TIGER 63B**1798506 LCI 63B  
BW: 94 AWW: 745

Feb. 02, 2014

HF TIGER 5T

**LCI 5T TIGER 83Y**LCI 5R FREEDOM GAL 215W  
LCI 505 FREEDOM 109T**LCI 109T FREEDOM GAL 163W**

MC LADY PRIDE 1L

Fall 2014 EPD's Black Angus									
BW	WW	YW	Milk	TM	CE	REA	Carcass Weight	Marb.	Fat
3.6	51	92	15	40	2.5	0.08	31	0.22	-0.020
	20%	15%					20%		5%

- 163W is out of our 1L cow that produced here till last fall.
- There is longevity in this cow line and they don't stay here if they aren't a producer.

# Hereford Bred Heifers

The first six heifers are bred to the much sought after MPPH 521X ACTION 106A (pictured right), 2013 Canadian Reserve National Champion Bull and high selling bull calf in Canada, his mother was the 2013 World Champion Female.



**93**  
Polled

## LCI WB 100W TRUST MISS 283A

C02981129 LCI 283A Feb. 11 2013  
BW: 80 Adj WWT: 661 Adj YWT: 975

KCF BENNETT 3008 M326

## NJW 73S M326 TRUST 100W

NJW P606 72N DAYDREAM 73S  
LBH 20J STANMORE 31R

## LCI WB 31R STANMORE LASS 859U

JTB 157K RIBSTONE GAL 702S

Fall 2014 EPD's ~ Top of the breed in <i>blue</i>									
BW	WW	YW	Milk	TM	SC	FMI	Fat	REA	Marb
3.2	61.2	111.5	24.6	55.2	1.4	163.3	0.06	0.83	0.30
	10%	3%	30%	15%				3%	5%

- A red eyed Trust heifer with top of the breed EPD's, WW top 10%; YW top 3%; Milk top 30%; TM top 15%; and great carcass EPD's REA 3%, MARB 5%.
- Her dam 859U raised the 886Y herd bull for us.
- You can't go wrong with 283A and preg tested early to Action 106A
- Bred May 7 to Action 106A and exposed May 29 – June 15 to LCI 666A.



- A Trust heifer with extra volume, sweet fronted, with top of the breed EPD's.
- Her dam 26W an own daughter of 68R the Calgary Bull Show Champion and is the right kind with a perfect udder.

**94**  
Polled

## LCI 100W TRUST MISS 156A

C02980912 LCI 156A Feb. 19 2013  
BW: 102 Adj WWT: 649 Adj YWT: 930

KCF BENNETT 3008 M326

## NJW 73S M326 TRUST 100W

NJW P606 72N DAYDREAM 73S  
JNHR RED STANDARD 68R

## LCI 68R RED ROCK LADY 10W

LCI 67M ROCK SOLID GAL 152R

Fall 2014 EPD's ~ Top of the breed in <i>blue</i>									
BW	WW	YW	Milk	TM	SC	FMI	Fat	REA	Marb
8.3	64.3	117.7	21.9	54.1	1.0	164.0	-0.015	0.70	-0.06
	1%		35%	10%	20%	5%	20%	5%	

- A super feminine long spined champion pedigree, Trust was Denver Champion.
- Her dam 10W's is sired by the Calgary Bull Show Champion 68R
- Preg tested early.
- Bred May 7 to action 106A and exposed May 29 – June 15 to LCI 666A.

**95**  
Polled

## LCI 100W TRUST MISS 252A

C02981119 LCI 252A Feb. 07 2013  
BW: 94 Adj WWT: 675 Adj YWT: 942

KCF BENNETT 3008 M326

## NJW 73S M326 TRUST 100W

NJW P606 72N DAYDREAM 73S  
JNHR RED STANDARD 68R

## LCI 68R STANDARD LADY 26W

LCI 82H KAHLUA LADY 116R

Fall 2014 EPD's ~ Top of the breed in <i>blue</i>									
BW	WW	YW	Milk	TM	SC	FMI	Fat	REA	Marb
6.4	61.6	108.1	22.2	53.0	1.1	144.1	0.007	0.55	0.11
	5%	2%	35%	15%	15%	15%	10%	10%	25%

- Preg tested early.
- Bred May 7 to Action 106A and exposed May 29 – June 15 to LCI 666A.





**96**

**LCI 100W TRUST MISS 225A**

C02981113 LCI 225A Feb. 02 2013  
 BW: 84 Adj WWT: 633 Adj YWT: 824

KCF BENNETT 3008 M326

**NJW 73S M326 TRUST 100W**

NJW P606 72N DAYDREAM 73S  
 LBH 20J STANMORE 31R

**LCI 31R STANMORE LASS 33T**

LCI SUPERIOR GIRL 223H

Fall 2014 EPD's ~ Top of the breed in <i>blue</i>									
BW	WW	YW	Milk	TM	SC	FMI	Fat	REA	Marb
2.7	49.3	84.8	22.6	47.3	1.1	166.0	-0.028	0.55	0.19
35%	40%	30%	35%	35%	15%	1%	5%	10%	10%

- A Trust daughter that is a product of top maternal bloodlines in the LCI program. 33T has an outstanding Sensation bull calf in the sale
- Again top EPD's and preg tested early .
- Bred May 7 to Action 106A and exposed May 29 – June 15 to LCI 666A.

**97**

**LCI 154U RIBSTONE LASS 115A**

C02980868 LCI 115A Feb. 27 2013  
 BW: 95 Adj WWT: 638 Adj YWT: 868

LCI 157K RIBSTONE 107R

**LCI 107R RIBSTONE 154U**

LCI 125P NELLIE 105S  
 BP PANDA 122P

**LCI 122P PANDA 73T**

LCI 6H OSWALD 112M

Fall 2014 EPD's ~ Top of the breed in <i>blue</i>									
BW	WW	YW	Milk	TM	SC	FMI	Fat	REA	Marb
6.3	53.7	93.2	26.8	53.7	1.0	162.2	-0.033	0.38	-0.20
	25%	10%	10%	10%	20%	1%	1%	35%	

- A crowd pleaser that is pigmented, short marked, clean made daughter of our 154U herd bull, with just the right size frame size for the day and all the stoutness we want. Big growth EPD's and milk. Crossed with Action promises an outstanding outcross.
- Preg tested early. Bred May 7 to Action 106A and exposed May 29 – June 15 to LCI 619A.



**98**

**LCI 311W TOTAL LADY 290A**

C02981131 LCI 290A Feb. 02 2013  
 BW: 82 Adj WWT: 685 Adj YWT: 959

MJT CENTURY 264P

**MJT TOTAL ET 311W**

MJT MISS 14H CHARISMA 228P  
 JNHR RED STANDARD 68R

**LCI 68R RED RIBSTONE LADY 17W**

LCI 157K RIBSTONE GIRL 214N

Fall 2014 EPD's ~ Top of the breed in <i>blue</i>									
BW	WW	YW	Milk	TM	SC	FMI	Fat	REA	Marb
4.8	51.8	90.6	20.1	46.0	0.7	126.2	0.008	0.30	-0.06
	30%	15%		40%		40%			

- A Total daughter with extra pigment and a pleasing profile
- A maternal pedigree with female greats like 264P, 228P, and the infamous 157K.
- Bred to the Holden 0132X bull that is known for light birth weight and high maternal. Preg tested early. Bred May 7 to HH Advance 0132X and exposed May 29 – June 15 to LCI 619A.

**99**

**LCI 370X MISS NORTH STAR 637A**

C02981188 LCI 637a March 02 2013  
 BW: 98 Adj WWT: 802 Adj YWT: 1031

R 0041 NORTH STAR 40U

**LCI BD 40U NORTH STAR 370 X**

LCI BD RIBSTONE LASS 306U  
 CHURCHILL RAMBO 8116U

**LCI CHINOOK LASS 181Y**

LCI 107R RIBSTONE LASS 135U

Fall 2014 EPD's ~ Top of the breed in <i>blue</i>									
BW	WW	YW	Milk	TM	SC	FMI	Fat	REA	Marb
8.7	75.9	115.6	27.9	65.9	1.2	173.9	-0.019	0.62	0.09
	1%	2%	10%	1%				10%	35%

- An outstanding line bred Ribstone heifer who is short marked and pigmented.
- She is packed with maternal power with 40U, 157K and 107R.
- Again bred to the light birth weight 0132X.
- Preg tested early. Bred May 7 to HH Advance 0132X and exposed May 29 – June 15 to LCI 666A.



Doenz Ranchers Ltd  
P.O. Box 362  
Warner, Alberta  
T0K 2L0

